



# CASE STUDY: Fire plans for Marylebone London residential property

## Customer requirement

For our customer site, a multi-storey residential block in Marylebone, London - RES were required to produce a set of **fire alarm zone plans** on completion of a fire detection and alarm system installation as-well as communal area **fire evacuation** and **procedure plans**, **fire escape plans** and **fire equipment plans**.

## Solution



Comprised of over 50 flats over five floors, some basic plan drawings were provided by the customer as a starting point.

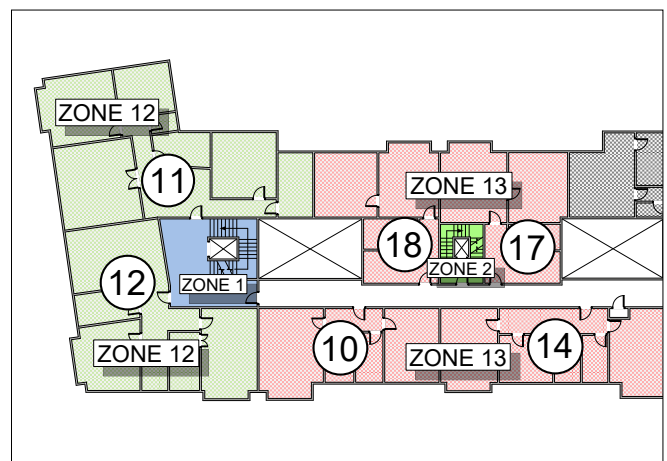
Producing a fire alarm zone plan is very much a team effort.

Our installation team would define the zone information based on the final install.

RES then mark up the blank drawings with the zone information which is then drawn up digitally using CAD software.

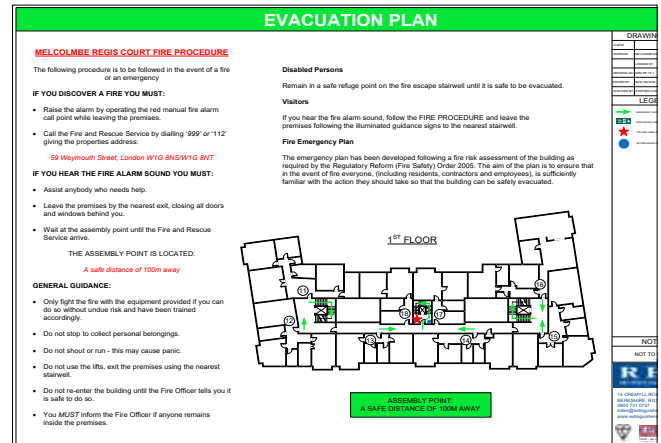
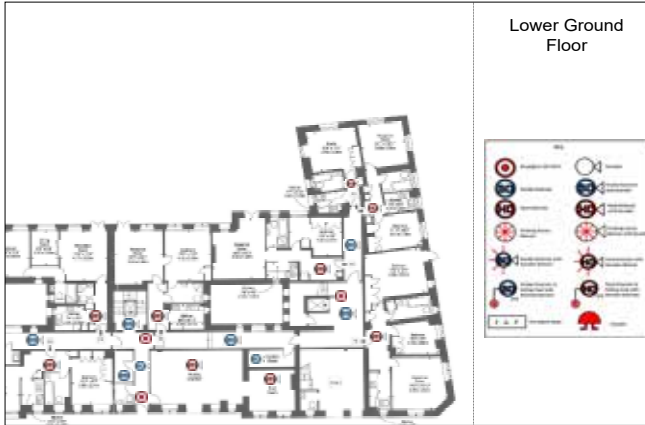
Colour coded Zones are clearly defined and labelled in the drawing, making it as clear as possible to understand.

The Zone chart is then printed and delivered to site.



## Solution (cont.)

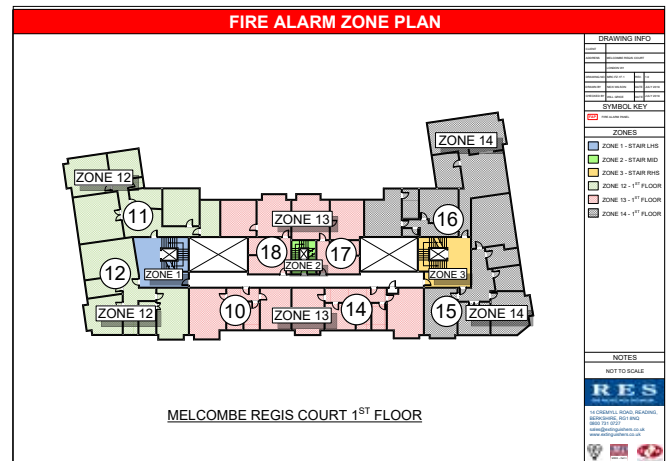
A set of **fire evacuation plans** were produced for each floor to provide residents with evacuation procedures in the event of a fire or an emergency.



The **fire equipment plans** detail the location of the installed fire detection and alarm system assets, as well as firefighting equipment.

## The Result

Our customer has an accurate diagrammatic representation in the form of a **fire alarm zone plan**, showing at the building entrances, the main circulation areas and the division into Zones.



The **fire evacuation plans** provide residents with critical information in the event of a fire or an emergency.



## OUR FIRE PLAN SERVICES

- Fire Evacuation and Procedure Plans
- Fire Escape Plans
- Fire Equipment Plans
- Fire Alarm Zone Plans