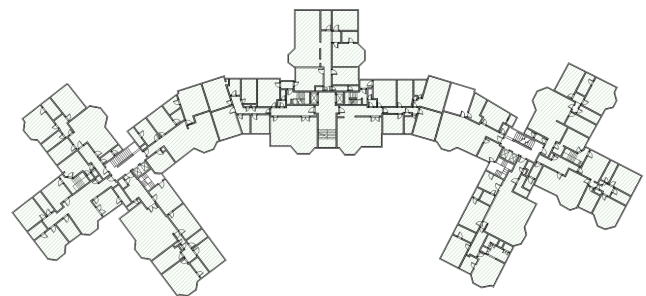


CASE STUDY: Melton Court Wireless Fire Detection & Alarm System

Customer requirement

Our customer needed a new Fire Detection and Alarm System for a large residential property containing over 80 apartments across eight stories in central London.

Three separate blocks that made up the premises would need to be networked together as-well as a link to commercial premises at the front of the property.



Solution

RES Fire proposed that a wireless fire detection and alarm system be installed.

Wireless EMS FireCell devices were connected to three HAES Elan fire control panels, one panel for each block.

Fifty new radio loop modules connect wirelessly to all of the fire safety devices in the building.



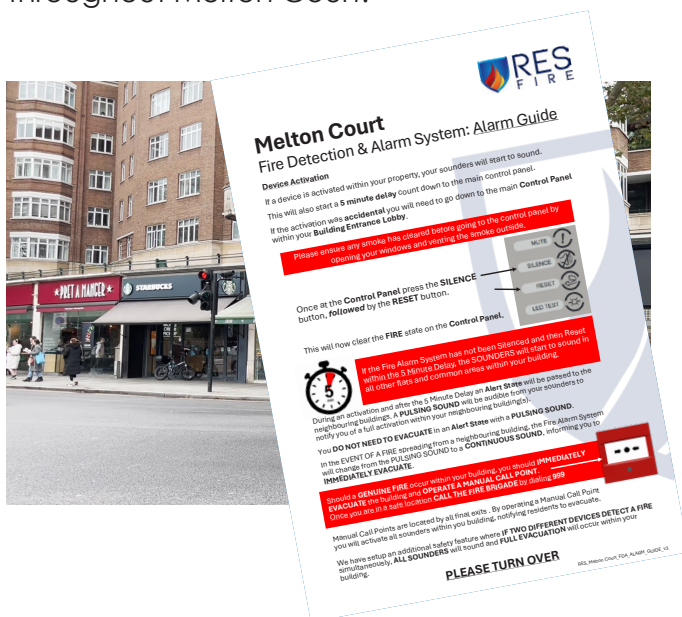
Behind the scenes, RES installed new cable trays and trunking to carry new cabling in the basement.

Solution (cont.)

The common areas such as the lobby, corridors and stairwells now have new wireless manual call points, as well as wireless multi-sensors and sounders.

Each flat has wireless heat detectors and wireless multi-sensors with sounders fitted.

Over 400 new devices have been installed throughout Melton Court.



One-to-one training was provided to the porter staff and an "alarm guide" handout and help videos were provided to the residents to ensure that they were informed of basic function of the new fire detection and alarm system.

The new fire detection and alarm system was linked to of the commercial premises in front of Melton Court, so that in the event of a fire in a unit, adequate notice is given to the residents.

The Result

Melton Court now has a fully compliant Fire Detection and Alarm system which will give the residents peace of mind and confidence that in the event of a fire, they are alerted to the danger.



OUR FIRE DETECTION AND ALARM SERVICES

- Design, Installation and Commissioning
- Servicing and Maintenance
- Additional Works
- Fire Alarm System Upgrades
- Fault Finding and Repairs
- Regular Checks