

CASE STUDY: Replacement fire rated flat front doors

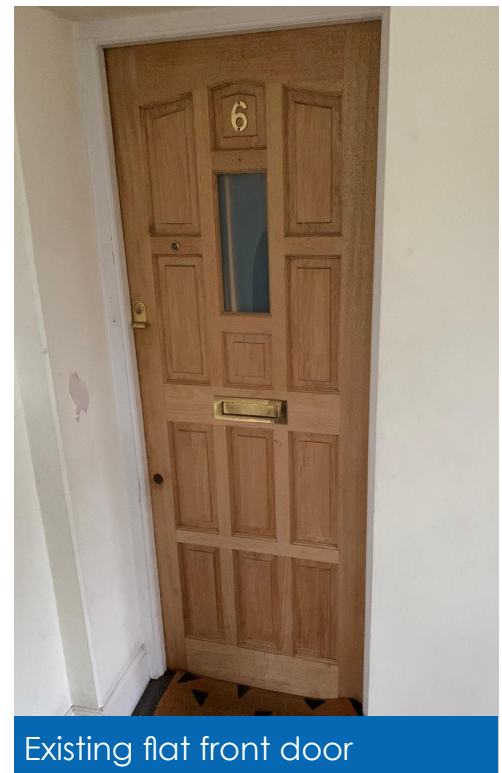


Customer requirement

Our client, SBA Property Management approached RES Fire to quote for the replacement of six flat front doors at a property in Surrey. The original doors, some with glazed panels above the doors were considered in the premises FRA not to offer sufficient fire resistance to support the premises 'stay put' fire safety policy, hence the recommendation by the assessor to replace the doors and glazing with compliant fire resistant installations.

RES Fire attended the property to take precise measurements of each doorset (door and frame) and glazed panels above to provide a quotation for the project including the options that were available to leaseholders regarding the style and finish of doors as well as the glazed panels.

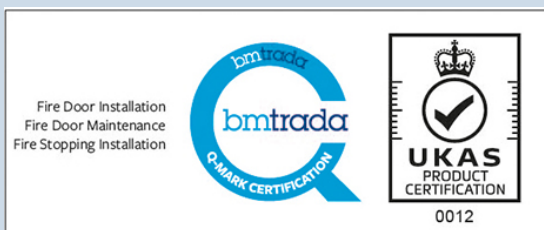
Once leaseholder options were confirmed and the quotation approved, RES set about ordering the doorsets complete with panels and scheduled in the installation based on the manufacturers confirmed delivery date.



Existing flat front door

Solution

RES Fire chose Sentry Doors, a leading manufacturer of fire doorsets, to provide the fire doorsets and fire resistant panels as they are extensively tested and approved under the BM TRADA Q-Mark Fire Door Manufacturer Scheme.



RES Fire are a certificated company to the BM TRADA Q-Mark Fire Door Maintenance, Fire Door Installation, and Fire Stopping schemes.



Replacement FD30s flat front door

Solution (continued)

Each doorset was supplied by the manufacturer as a complete doorset (door and frame) including all door furniture (ironmongery) such as locks, fire rated hinges and door closers.

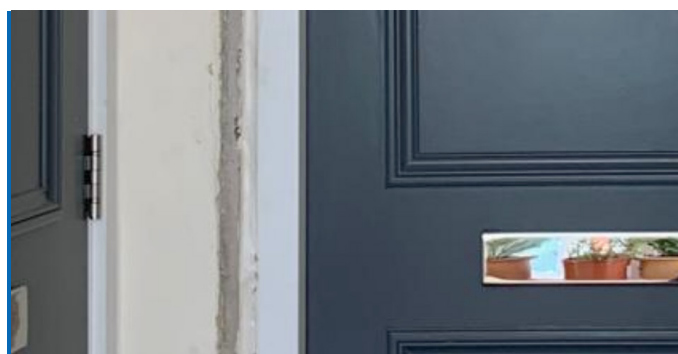
During the installation RES Fire were audited on-site by BM TRADA as part of the Q-Mark schemes' regular ongoing assessment requirements.

The audit covered both the doorset installation and the surrounding fire stopping work around the newly installed doors.

A rigid process and documentary evidence for fire doorset installation has to be adhered to in order to comply with the schemes high standards.

These include completion of "Records of Installation Activities", labelling and plugging of the doors, taking photographic evidence as-well as providing product technical datasheets for the specific doorsets installed.

Nothing can be missed.



Fire stopping installation between the new frame and wall



Following the fire stopping audit, new architrave was installed around doorsets

When installing a new doorset it is essential that not only is the frame correctly fitted to the surrounding walls but also all gaps and holes are suitably fire stopped to the required fire resistance as per the manufacturers installation instructions.

Our certification to both the Q-Mark fire door installation and fire stopping schemes means our technicians follow strict installation procedures, ensuring a projects high level of workmanship. Both the BM TRADA installation and fire stopping audits were passed without any reported issues.

Result

The flats residents now have complete peace of mind in the knowledge that their flat front door installation is compliant to the premises stay put policy, providing a minimum of 30 minutes of fire resistance in the event of a fire.



The property management company and leaseholders are completely confident in the knowledge that the Q-Mark approved doorsets specified have been correctly and competently installed by Q-Mark certified technicians.

The completed doorsets now have a high quality paint finish giving the communal stairwells a uniform, modern and stylish feel.

“RES Fire have provided a professional fire door installation for the leaseholder’s and residents, and we are very happy with the end result”

SBA Property Management



OUR FIRE DOOR SERVICES

- Fire Door Installation
- Fire Door Maintenance