

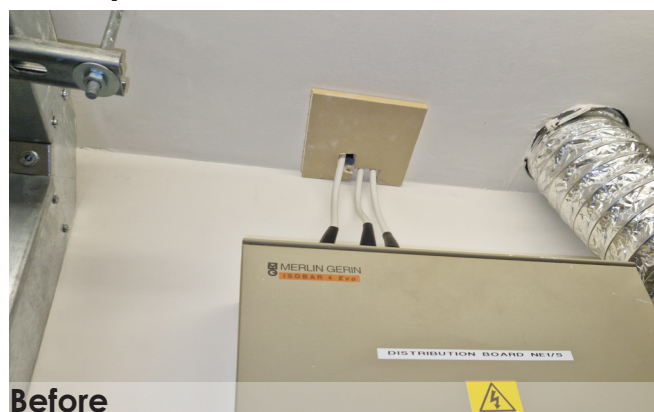
## CASE STUDY: Fire stopping for therapy establishment

The following fire stopping examples are from a customer site where RES Fire were tasked with undertaking a number of passive fire protection works including the sealing of pipes, cables, gaps and holes along compartment lines.



RES Fire are certified with the BM TRADA Q-Mark fire stopping scheme to undertake fire stopping installations. As with all fire stopping installations, a BM TRADA Q-Mark label is applied to provide traceability and conformity of the installation and products used.

### Example 1



This example uses Quelfire ablative sealant, HPE and Firebatt around electrical cabling and provides up to 60 minutes protection.

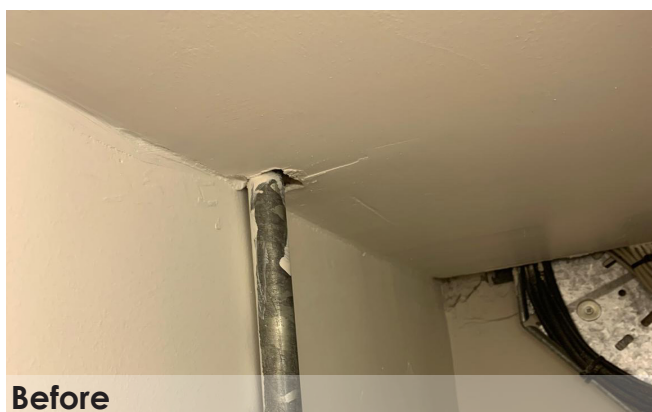
### Example 2



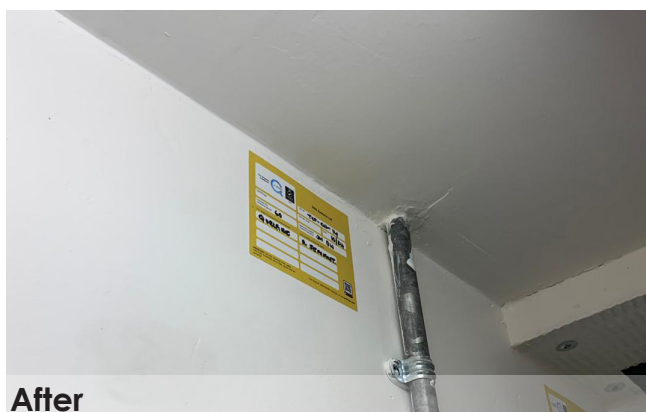
This example uses Quelfire ablative sealant, HPE and Firebatt around electrical cabling and provides up to 60 minutes protection.



### Example 3



**Before**



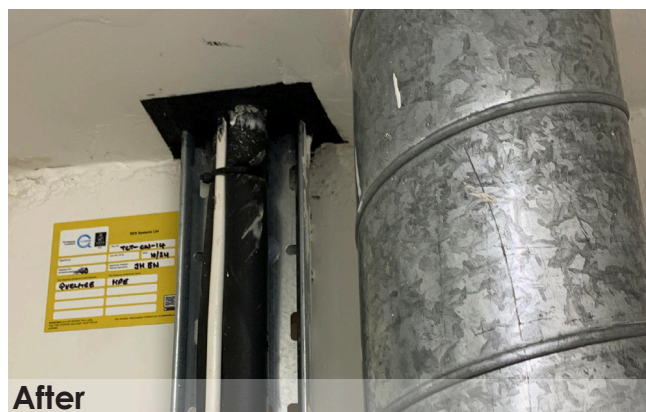
**After**

This example uses Quelfire ablative sealant around pipework and provides up to 60 minutes protection.

### Example 4



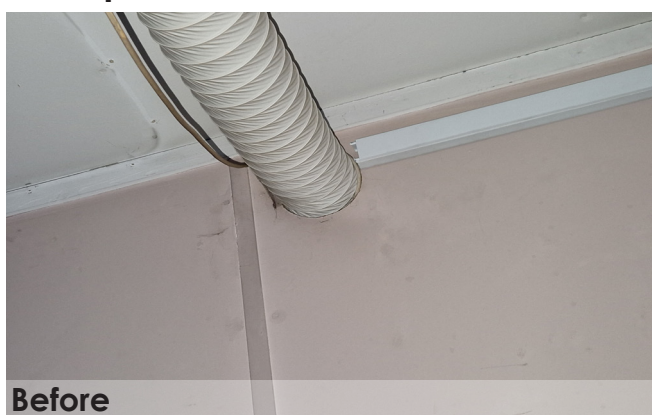
**Before**



**After**

This example uses Quelfire HPE sealant around electrical cabling and provides up to 60 minutes protection.

### Example 5



**Before**



**After**

This example uses Quelfire Collar around a duct pipe and provides up to 60 minutes protection.

## Example 6



**Before**



**After**

This example uses Quelfire ablative sealant, HPE and Firebatt around electrical cabling and provides up to 60 minutes protection.

## Example 7



**Before**



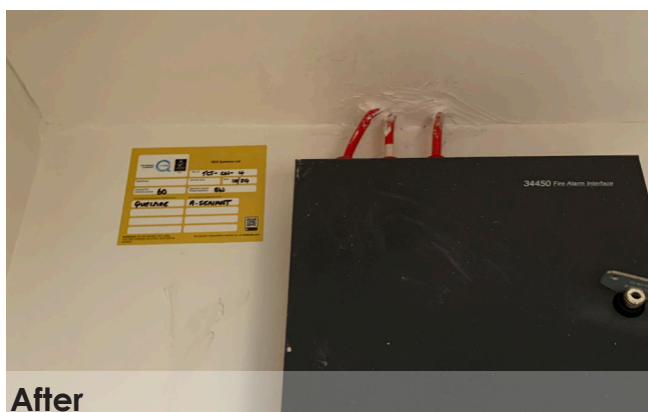
**After**

This example uses Quelfire ablative sealant, HPE and Firebatt around pipework and provides up to 60 minutes protection.

## Example 8



**Before**



**After**

This example uses Quelfire ablative sealant around electrical cabling and provides up to 60 minutes protection.